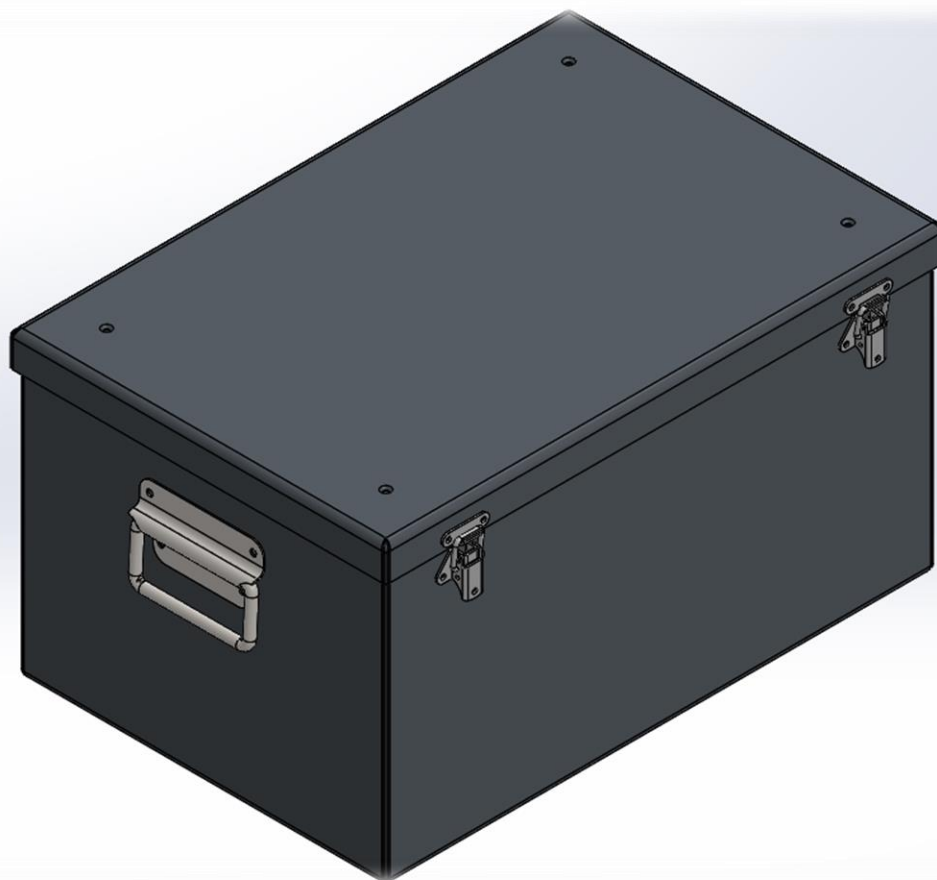


### Product Description:

ESTS Aluminium Discard Bin (Sealed)

### Product Image:



### Details:

For use with laboratory autoclaves / sterilizers, typical applications include laboratory waste and media. The sealed bins are intended to minimise the risk of release of contents during transport and storage.

The discard bin is manufactured from 5251 aluminium which makes it lightweight and easier to handle than equivalent sized stainless steel bins. The bin assembly contains two handles at either end for lifting / carrying, a lid with replaceable seal and 4 toggle latches for locking the lid in place.

### Warnings:

- Carry out visual inspection of the bin, lid and seal, checking for signs of damage before use
- The discard bin may be heavy once filled with waste / media, only capable persons should attempt manual handling
- The discard bin and its contents may be extremely hot after a sterilization cycle, handle with caution and use the appropriate PPE
- To prevent damage and ensure effective steam penetration to the load items, the lid **must** be removed before autoclaving